


2016 **IOWA RAIL PLAN**

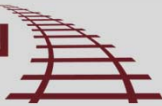


**Welcome**

MPO/RPA Quarterly Meeting  
September 15, 2015

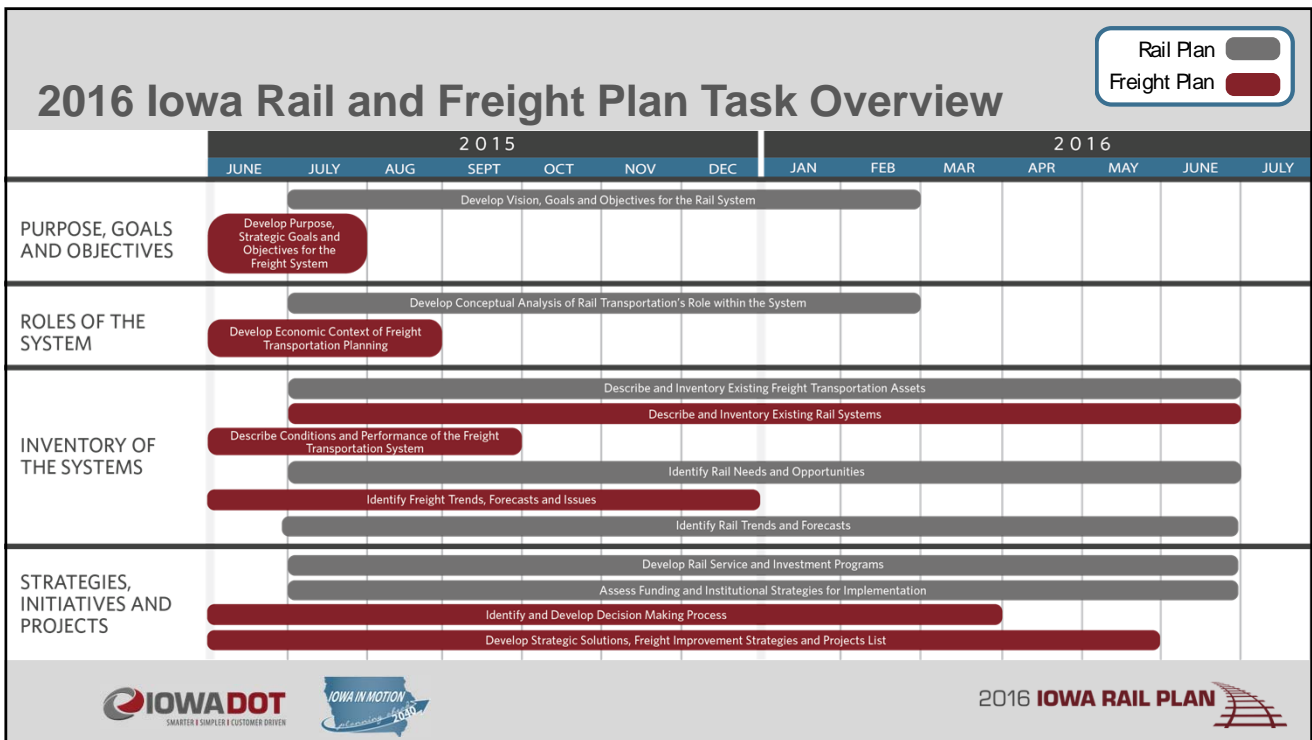


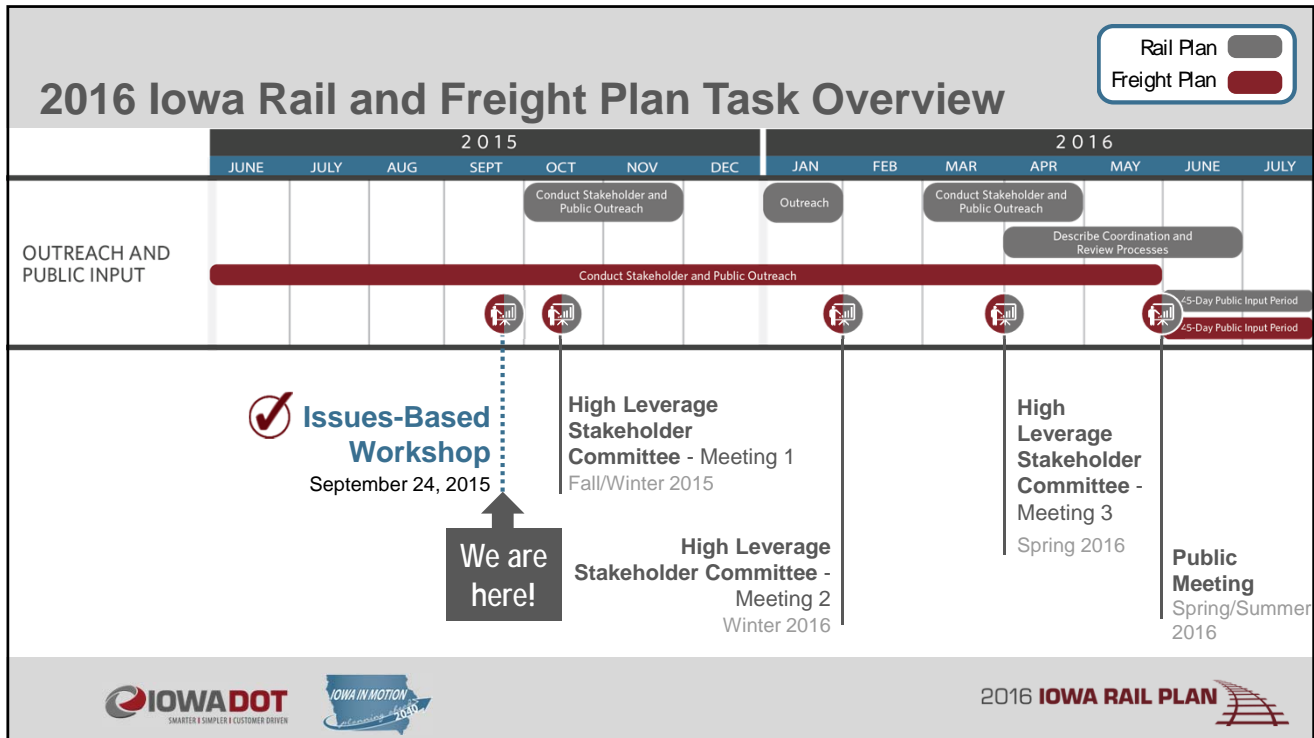
2016 **IOWA RAIL PLAN**



## Goal

Accurately define what the rail and freight system in the state looks like today and what it needs to look like in the future.





# 2016 Iowa Freight Plan Overview

## Freight Plan

## Goals of the Iowa Freight Plan



Improve contribution of freight system



Reduce congestion



Improve safety and security



Repair system



Implement innovative technology



Reduce impacts



Gather input

## Outline/objectives of the State Freight Plan

Develop strategic goals and objectives

Identify and document the economic importance

Document freight trends and issues

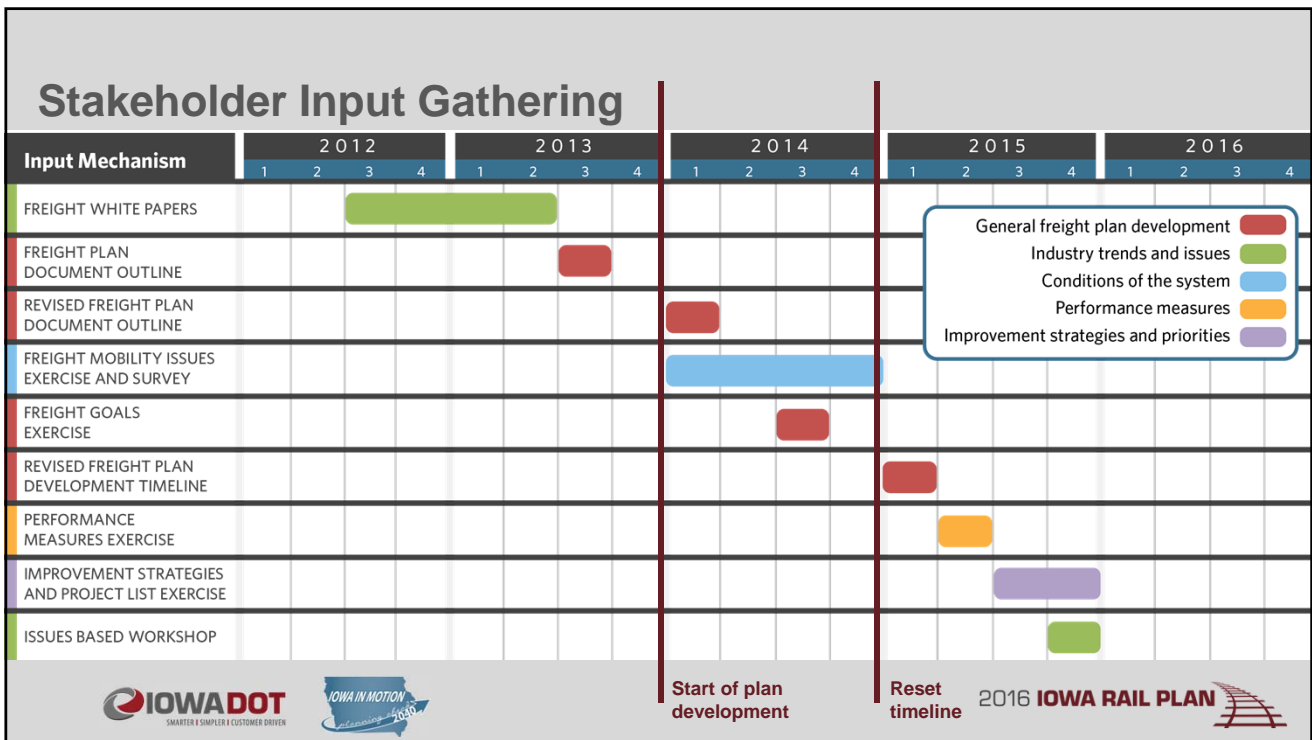
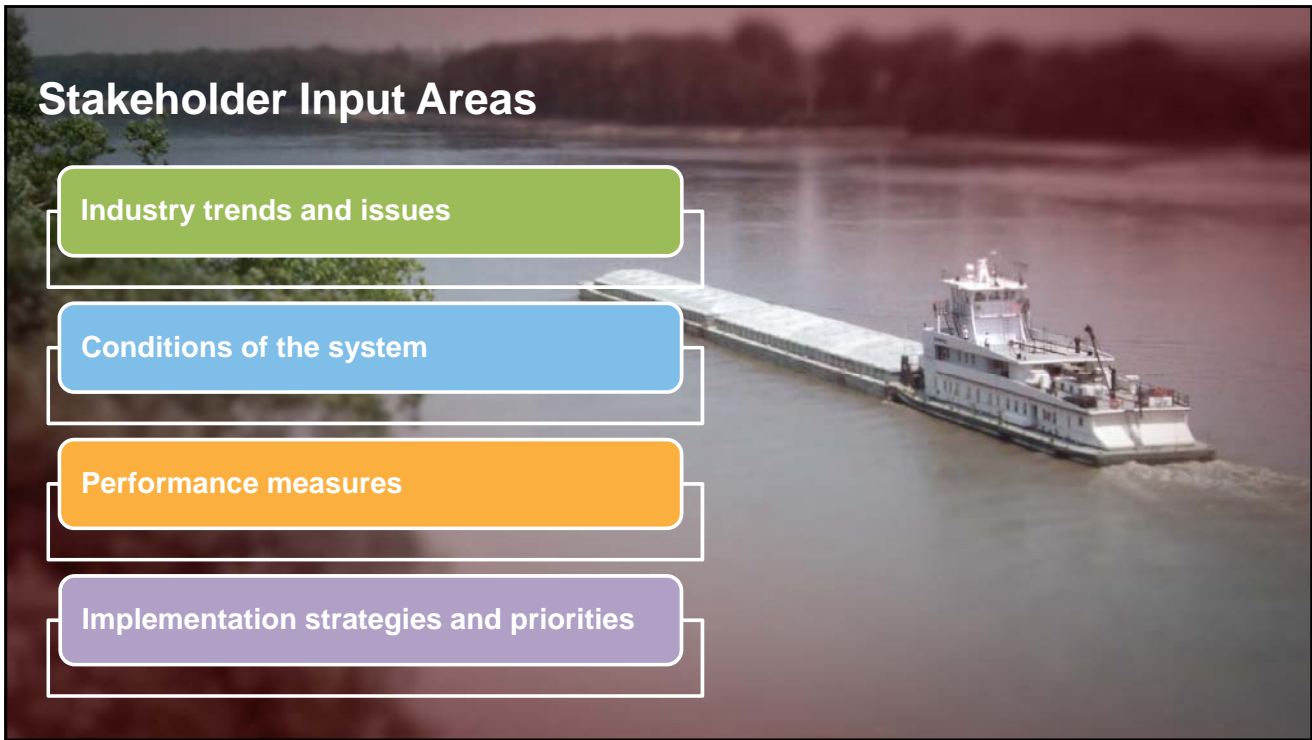
Project freight-related forecasts

Inventory existing assets

Describe conditions of the system, develop performance measures

Identify and develop the decision making process

Develop strategic solutions, improvement strategies and a prioritized project list



## Guidance on Freight Improvement Strategies

Must include:

- A description of the **strategies the state is employing to address freight mobility issues**

Recommendations:

- Include a presentation of the state's complete freight improvement strategy, **with different improvements ranked in order of priority** (or grouped into higher and lower priority groups)
- Include an analysis of **how each improvement will advance the state's strategic goals**



2016 IOWA RAIL PLAN



## Freight Improvement Strategies

- Development process
  - Current/future department initiatives
  - Freight Advisory Council
  - Freight Executive Committee
  - Other planning partners



2016 IOWA RAIL PLAN



## Example Strategies

- Explore/create other **funding sources** to increase investment in the freight transportation system
- Target investment to **address mobility issues** that impact freight facilities
- Utilize designs that are **compatible with oversize/overweight** freight movements
- Target **investment on the interstate system** at a level that reflects the importance of this system for moving freight
- **Leverage information from users** of the system to support advanced decision-making and incident avoidance



2016 IOWA RAIL PLAN



## Multimodal Freight Projects

- Aviation – Iowa DOT Office of Aviation
- Highway – Freight Mobility Issue Survey, Value, Condition, and Performance (VCAP) concept
- Pipeline – Propane Supply Chain Optimization Study
- Railroad – State Rail Plan
- Waterway – U.S. Army Corps of Engineers



2016 IOWA RAIL PLAN



## Example Project List - Highway

- VCAP matrix
- Tools
  - Freight Mobility Issue Survey
  - Iowa Travel Analysis Model (iTRAM) statewide travel demand model
  - Infrastructure Condition Evaluation (ICE)
  - Freight Network Optimization study
  - Iowa DOT truck traffic data
- Process

**Iowa DOT VCAP Freight Project Evaluation Matrix**

Project	Value	Cond	Perf	Bonus/Preval		Total VCAP Rating	Final VCAP Rating
				Freight Network Optimization	Freight Facility Priority		
Project A	4	3	3	1	1	10	10
Project B	2	4	3	1	1	11	11
Project C	3	2	3	1	1	10	10
Project D	3	2	3	1	1	10	10
Project E	5	5	5	1	1	18	18
Project F	7	8	8	1	1	25	25
Project G	5	6	6	1	1	19	19
Project H	9	7	7	1	1	25	25
Project I	8	7	7	1	1	24	24

- Populate project listing with highway freight bottlenecks, including freight mobility survey submittals.
- Projects are ranked based on bottleneck occurrences and/or prioritization.
- Projects are then ranked according to their ICE rating and iTRAM truck VMT reduction.
- The rankings across the three categories (value, condition, performance) are then summed for the initial VCAP rating. (Low is good)
- Projects are then evaluated based on their consistency with freight network optimization and proximity to freight-intensive facilities.
- The initial VCAP rating is then adjusted down based on the bonus categories. (Lower is better)
- Final project ranking is based on the adjusted VCAP rating.

**IOWA DOT**



2016 IOWA RAIL PLAN



## Example Project List - Highway

MAP ID	LOCATION	VALUE		CONDITION		PERFORMANCE		AVERAGE RANKING	TIEBREAK TRUCK VOLUME	PRIORITY RANK
		iTRAM	"V" RANK	ICE	"C" RANK	INRDX	"P" RANK			
47	US-151 N/S @ MAQUOKETA DR	53.29	38	54.93	3	1040	6	15.67	2115	1
48	I-80/29 N/S THROUGH COUNCIL BLUFFS	60.79	32	56.87	6	374	16	18.00	13579	2
57	I-35/80 N/S, E/W @ IA-141	49.26	43	59.82	14	2036	2	19.67	12761	3
76	I-380 N/S THROUGH CEDAR RAPIDS	76.37	26	55.17	4	123	33	21.00	7226	4
5	US-30 E/W THROUGH MISSOURI VALLEY	21.80	58	52.78	2	1563	4	21.33	993	5
87	I-74 @ MISSISSIPPI RIVER	90.95	23	66.38	33	706	9	21.67	2908	6
66	IA 160 E/W @ I-35 & I-35 N/S @ IA-160/ EXIT 90	108.67	18	64.56	27	114	35	26.67	8331	7
71	I-380/US-218 N/S FROM SAN MARNAN DR TO W 9TH ST	12.87	61	62.55	21	1764	3	28.33	2799	8
15	I-35 N/S @ US-20/EXIT 142 & US-20 E/W @ I-35/EXIT 153	114.43	17	74.47	55	420	14	28.67	5559	9
79	I-380 N/S @ I-80/EXIT 0 & I-80 E/W @ I-380/EXIT 239	146.63	10	73.86	53	250	24	29.00	11161	10
55	I-35/80 N/S @ DOUGLAS AVE	52.83	41	59.58	13	116	34	29.33	12884	11
82	I-80 E/W FROM 1ST AVE TO DUBUQUE ST	199.88	1	63.61	23	27	64	29.33	12240	12
11	US 30 E/W @ US-59/IA-141	60.33	33	70.01	41	387	15	29.67	1377	13
65	US-6 E @ I-80 (EAST) & US-65 N/S @ I-80/US-6/NE HUBBELL AVE/EXIT 142	44.08	44	71.79	47	9375	1	30.67	9601	14
60	I-35/80 N/S, E/W FROM MERLE HAY RD TO IA-415	75.78	27	56.44	5	30	63	31.67	14124	15
43	US-61 N/S THROUGH BURLINGTON	18.63	59	58.76	9	172	27	31.67	1107	16
17	I-35 N/S @ US-30/EXIT 111 & US-30 E/W @ I-35/EXIT 151	131.58	13	76.54	64	336	19	32.00	7633	17
51	I-80/I-35/I-235 N/S, E/W @ SW MIX MASTER	92.24	22	74.58	56	365	18	32.00	6870	18
59	I-35/80 N/S, E/W FROM NW 86TH ST TO MERLE HAY RD	67.38	30	59.15	12	45	55	32.33	14089	19
84	US-61 N/S @ I-80/EXIT 123 & I-80 E @ US-61/BRADY ST/EXIT 295	53.65	36	71.04	44	368	17	32.33	11230	20
54	I-35/80 N/S @ US 6/HICKMAN	53.37	37	58.81	11	61	51	33.00	12804	21
63	I-35 N/I-235 W @ I-80/I-235/EXIT 87 & I-80 E/W @ I-235/I-35/EXIT 137	119.00	16	75.19	59	226	25	33.33	11709	22
80	I-80 E/W FROM I-380 TO IA-965	165.25	8	62.23	20	0	73	33.67	12726	23
83	I-80 E/W FROM DUBUQUE ST TO IA-1	196.39	2	65.13	28	0	73	34.33	12389	24



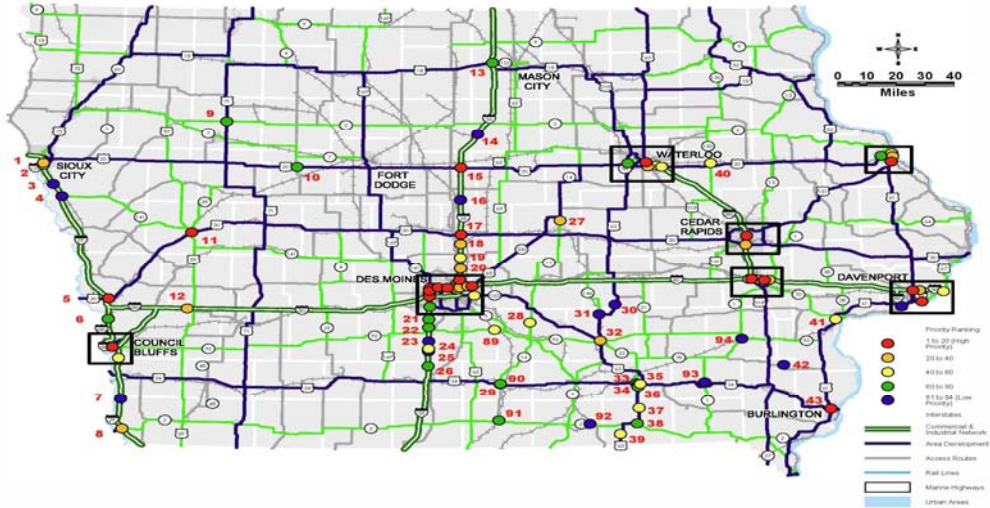
**DRAFT**

2016 IOWA RAIL PLAN





# Example Project List - Highway

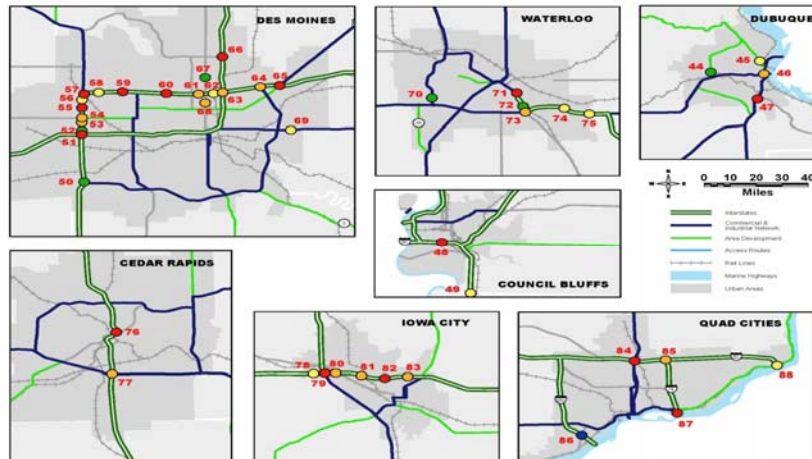


**DRAFT**

2016 IOWA RAIL PLAN



# Example Project List - Highway



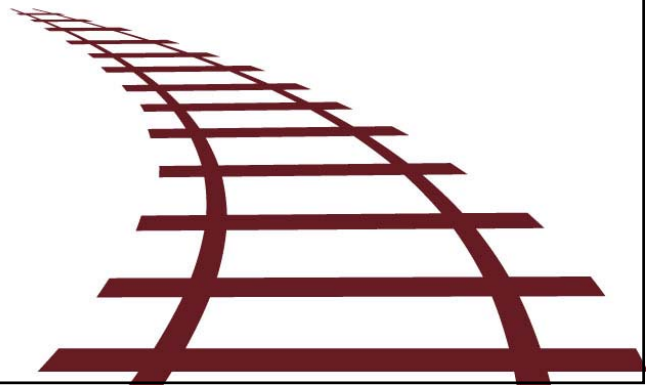
**DRAFT**

2016 IOWA RAIL PLAN



# 2016 Iowa Rail Plan Overview

Rail Plan



## Federal Railroad Administration (FRA) Guidance



Stakeholder engagement



Identify proposed rail improvements





Safe, efficient, convenient freight transportation




Economic development

## Goals and Objectives of the Iowa Rail Plan







**Merge rail plan into multimodal framework**




**Economic benefits**




**Align initiatives with Iowa priorities**




**Unify common rail interests**





**Develop in tandem with Iowa Freight Plan**




**Open and inclusive process**



**Educate the public through public meetings**

2016 **IOWA RAIL PLAN** 


## Additional Goals and Objectives Iowa Rail Plan

- Unique issues to Iowa
- Identify rail dependent commodities and industries
- Identify essential rail corridors by commodity
- Enable short line railroads to support economic development
- Look at abandonments more closely
- Identify investments and public benefits of the rail system
- Identify railroad needs and priorities
- Identify solutions to rail system bottlenecks


## Iowa Rail and Freight Today

4 times faster  
than trucks 

84% of shipments are  
coal, chemicals, farm &  
food products 

 37.7 million  
tons received

 Over 3,500  
rail employees

 48.5 million  
tons shipped

 Over 3500  
miles of track

Average freight length over 1 mile



 59,824 passenger  
rides in 2013

**Combined  
Stakeholder  
Engagement**  
Freight and Rail Plan

2016 **IOWA RAIL PLAN**



## Stakeholder Participation



### Issues-Based Workshop

- Marks the beginning of the upcoming public and stakeholder engagement efforts for the planning process
- Introduces details and status of the State Rail and Freight Plans
- Provides opportunity to hear from stakeholders
- Offers a complementary online survey component
- ~200 invitations distributed



### High Leverage Stakeholder Committee

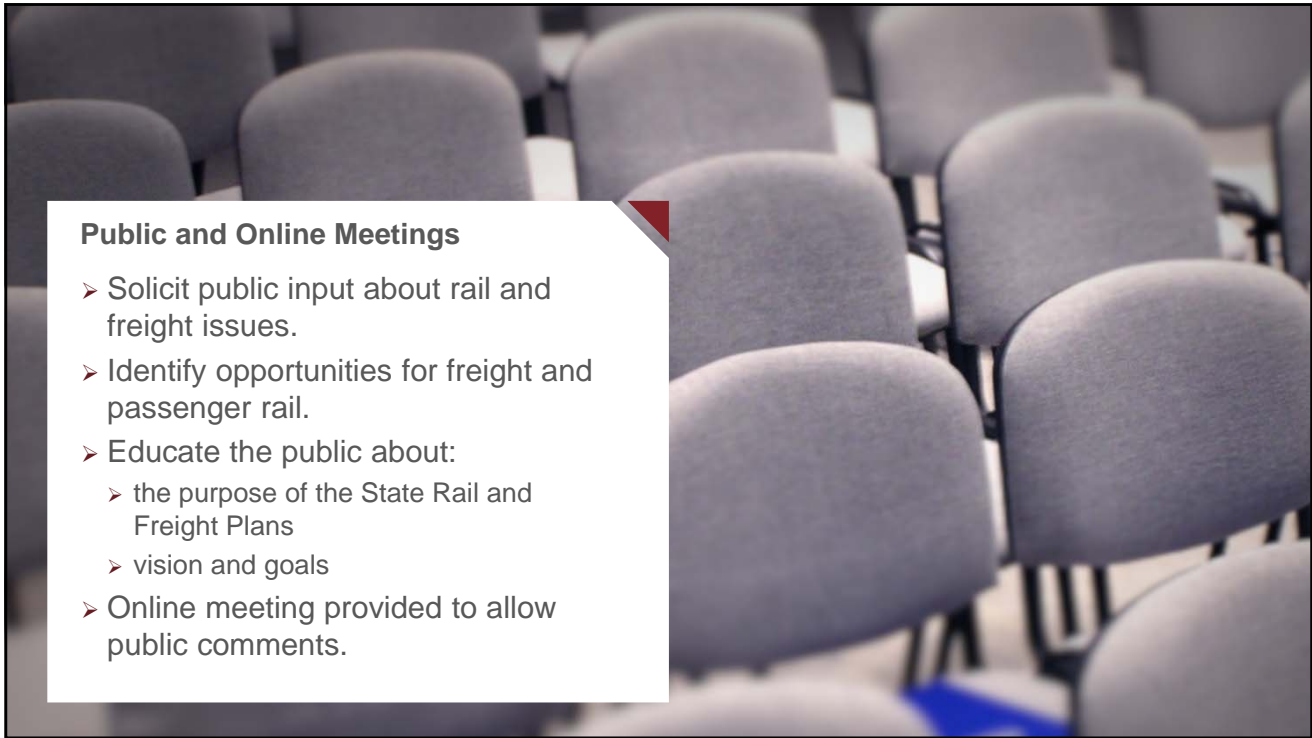
- Develop vision and goals for State Rail and Freight plans.
- Discuss strategies for improvements
- Discuss location-specific improvement projects.
- Composed of local persons having an active role in the community.

*\*High Leverage Stakeholder Committee members will be selected by the Iowa DOT and actively recruited with the assistance of local governments.*



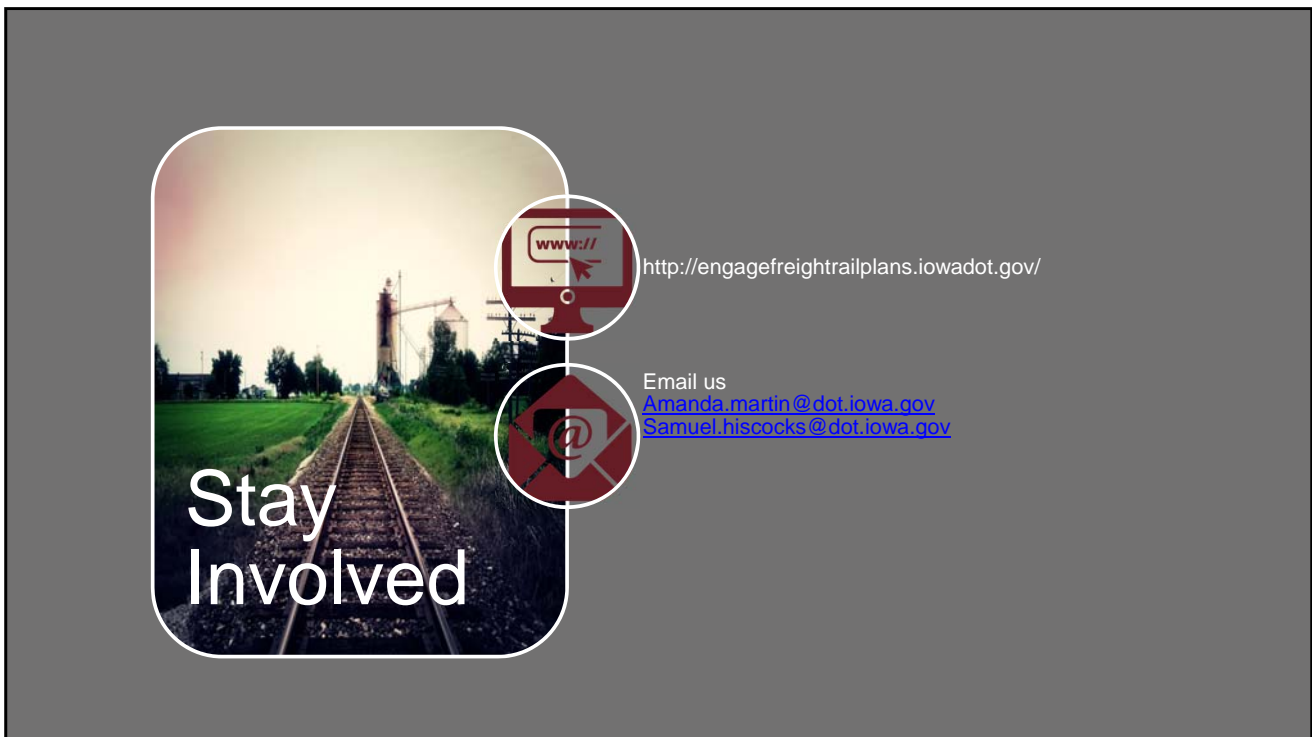
### Shipper Interviews

- Learn shipper attitudes about current rail and freight issues.
- Learn about the role and importance of public programs.
- Explore interest and use for shippers without on-site rail access.
- Class I, II shippers




**Public and Online Meetings**


- Solicit public input about rail and freight issues.
- Identify opportunities for freight and passenger rail.
- Educate the public about:
  - the purpose of the State Rail and Freight Plans
  - vision and goals
- Online meeting provided to allow public comments.



**Stay Involved**



<http://engagefreightrailplans.iowadot.gov/>



Email us  
[Amanda.martin@dot.iowa.gov](mailto:Amanda.martin@dot.iowa.gov)  
[Samuel.hiscocks@dot.iowa.gov](mailto:Samuel.hiscocks@dot.iowa.gov)